



43' Gameboat

Length, overall (LO.A.)	43'
Beam, overall (B.O.A.)	14' 10"
Deadrise (at transom)	14.5°
Draft	33"
Displacement (std fuel load)	32,000 pounds
Fuel capacity standard	640 gallons
Water capacity	100 gallons
Holding tank capacity	10 gallons
Cockpit area	140 square feet

Performance (with 550 Cummins)

Wide Open Throttle	35 Knots
Cruise	30 Knots
Fuel Burn	56 GPH
Range (with 10% reserve)	365 Miles



CONSTRUCTION

- Ablative/Copolymer anti-fouling bottom paint, 2 coats, primed
- Awlgrip pump-room, lazarette, forward bilge and anchor locker for enhanced visibility and easier maintenance
- Blister resistant modified epoxy resin in entire hull skin
- Custom blended modified vinylester and polyester resin used in structural laminates, topsides, bridges, and hardtops
- Dockside and overboard pump outs for holding tank
- Satin interior finish throughout
- High performance isophthalic gelcoat npg superior gloss, flexibility and outstanding weathering characteristics
- Hull vacuum bagged using Airex foam cores with Aramid and E glass hybrid fiberglass laminates
- Hull interior isophthalic gelcoat topcoat with a durable high gloss polyurethane coating
- Aluminum fuel tank and molded freshwater and holding tanks
- Nonskid for traction and durability
- Stringers, fiberglass encapsulated foam
- Vacuum infused composite bulkheads

MECHANICAL

- Air Conditioning - direct expansion zoned with reverse cycle heat for complete climate control throughout the interior and with individual temperature controls for staterooms and salon
- Bilge pumps with additional clean out pumps on centerline linked into monitoring system and connected to switches for automatic and manual operation
- DC power-assist hydraulic steering
- “MVP” engineroom ventilation system with supplies and discharge fans for proper fresh air supply and water intrusion suppression
- Fire suppression system tied into main engine and generator ignition systems with override
- Fuel and oil lines, flexible, steel reinforced USCG approved aircraft type.
- Fuel priming pumps electric 12V DC, for main engines
- Hour meters on main engines and generator
- Internal sea strainers for generator
- Oil changing system, gear type pump for main engines, transmissions, and generator
- PEX plumbing, freshwater system with manifold system shut off
- Deck pump out fitting and direct overboard pump out for holding tank
- A/C pressurized freshwater system with on deck freshwater fill and cockpit dockside supply inlet with pressure reducing valve

MECHANICAL CONTINUED

- External sea strainers for main engine pick ups
- Engine room entrance and remote mounted start and stop switches for easier accessibility
- Fresh water supply in engineroom for general maintenance and cleaning
- Propellers - Class 'S' pitch tolerance (ISO 484/2) and dynamic balancing. Advanced design cambered blade sections for optimum performance.
- Racor fuel water separators for main engines and generator includes vacuum gauge for fuel filter restriction - Awlgrip white
- Rudders, bronze, with composite rudder bearing and drip-less seal laminated into hull
- Seacocks, stainless steel, ball-type sea valves and strainers for all thru-hulls below the water line
- Shafts - 2 Aquamet high-strength stainless steel, double-taper with machined keyway and thrust plate at main engine couplings
- Struts - thru-water, Nibral
- Trim tabs, Humphree Interceptor with individual controls
- Twin diesel engines with marine grade reduction gears *See manufacturers information for specifications
- Water heater, quick recovery, electric



CUMMINS QSB6.7

Overview:

410 kW | 550 hp

- Quiet operation, including an 80-percent reduction in noise at idle, is one of the many benefits from the common-rail fuel system
- Enhanced sociability from the high-pressure common-rail design virtually eliminates smoke and improves the whole boating experience
- Peace of mind delivered by the Cummins Captain's Briefing and global service network
- Built at Darlington Engine Plant in Darlington, U.K. and Rocky Mount Engine Plant in Rocky Mount, NC, U.S

ELECTRICAL

- 24V DC ship's service throughout
- 12V power supply with breakers for electronics
- Anchor light/navigation lights
- Batteries, (2) independent 24V banks mounted for easy access, (1) house bank, (1) electronics bank
- Battery chargers, (2) with thermal cutoff and switching system for complete integration
- Battery distribution panel with battery cutoff and charging system breakers
- Battery parallel system for main engines and generator start
- Bonded electrical system with ground plate
- Color-coded, labeled wiring system with corresponding drawings
- LED interior lighting throughout
- Emergency DC crossover
- Engineroom lights, DC with switch
- Generator, Diesel – Onan QD 9.5 kW (E)
- Shore power cable with 3 wire grounded cord, 50 amp/220V inlet with 50' cord
- Instrument panel lights for main electric panel
- Master electrical control panel located in cabin with 12V/ 120V circuit breakers, individual switching for shore or generator supply and gauges for electrical supply, voltmeter, ampmeter and frequency
- Receptacles, 120V duplex with GFI throughout

Onan Marine QD

8 kW

Generator



8 kW

- The Cummins Onan Digital Display provides user-friendly diagnostics including extensive engine and alternator information and more
- Largest worldwide certified Distributor/Dealer support network in the industry
- The optimized mounting system greatly reduces vibration
- Electronic frequency control - a must for digital appliances and computers requiring quality power
- Cummins Onan marine generator sets are emissions certified to U.S. Environmental Protection Agency (EPA) emission standards
- More than 90 years of marine experience stand behind every Cummins Onan Marine generator set

FLY BRIDGE

- Controls: side mounted electronic controls
- Fire system control with automatic and manual discharge and override system at console
- Helm seat, teak ladder back with 4" pedestal and removable cushions and covers
- Instrumentation based on engine package
- Lighted compass flush mount on centerline
- Manual engine shutdown switches in console
- Nonskid deck for traction and durability
- Power assist steering
- Trim tab control switch mounted at console
- Storage under bench seats

COCKPIT

- Dockside water connection with pressure reducing valve under forward gunwale
- Freshwater wash down with hose bib located under forward gunwale
- Gaskets for all lids, doors and access doors
- Indirect lighting under coaming
- Backing plate in deck for fighting chair or table
- Lazarette hatch with access to steering, trim tabs, drains and pumps
- Observation mezzanine freezer box & bait prep
- Stainless steel cleats and hawse pipes
- Rod holders, (24) flush mounted
- Seawater wash down under gunwale
- Self bailing cockpit with large cockpit scuppers
- Stainless steel gas pistons, all hatches and lids
- Walk-through transom door with lift gate

SALON, LOWER CABIN & GALLEY

- Custom layout to be approved by customer
- Air conditioning with reverse cycle heat
- Flooring, teak & holly
- Headliner, Majilite, natural color, 1/8" foam and tricot backing
- Main electrical service panel, AC/DC
- Teak cabinetry with drawers – satin finish
- Countertop, high gloss bone color Corian
- Lights, overhead LED lighting
- Microwave/convection oven in galley cabinet
- Refrigerator and freezer, large capacity, deep-drawer under-counter
- Sink, recessed w/ S.S. faucet

HEAD

- Countertop, one-piece molded bone Corian with rounded edges and with sink with satin nickel faucet
- Electric heads plumbed with y-valve for overboard discharge or direct to holding tank
- Exhaust fan with vent
- flooring, non-skid
- Linen storage
- lower vanity with teak door
- Lights, overhead LED lights recessed in ceiling
- Mirrored wall behind upper vanity, medicine cabinet with mirrored doors
- Towel bars and ring

MISCELLANEOUS

- Anchor - constructed with a high-tensile, corrosion resistant aluminum magnesium alloy
- Anchor locker with access from deck
- Anchor rode
- Awlgrip bilge areas with access hatches, snow white and lighted using magnetic switches for easier maintenance and cleaning
- Awlgrip lazarette, engine room, anchor locker and forward bilges
- Fire extinguishers (3)
- Mooring lines, braided nylon (6)
- Stainless steel bow, spring and stern cleats thru-bolted to aluminum backing plates
- Water delivery kit with tool set (D)

NOTES

This specification sheet is subject to change. The right is reserved to make changes, without notice, at any time, in equipment, materials, prices and specifications. Line drawings and photos may show some optional equipment

- A. Capacities of tanks are estimates and useable volume will vary depending upon conditions.
- B. These prices apply only if order is placed prior to boat going into production. Prices are for standard installation only. Custom work is extra cost.
- C. Weight shown is calculated with standard fuel and water tanks full.
- D. Includes life jackets (6 adult), life ring (21") flare kit, fenders: 10" (2), engine oil, deck mop, deck brush, bucket, hose, nozzle, fuel filters: engines and generator, raw water pump impeller for generator (1), boat soap (1qt.) and bilge cleaner (1qt.)
- E. Generator is not intended to supply power for all standard and, optional accessories. Load must be limited to generator output rating.

PRELIMINARY LAYOUT

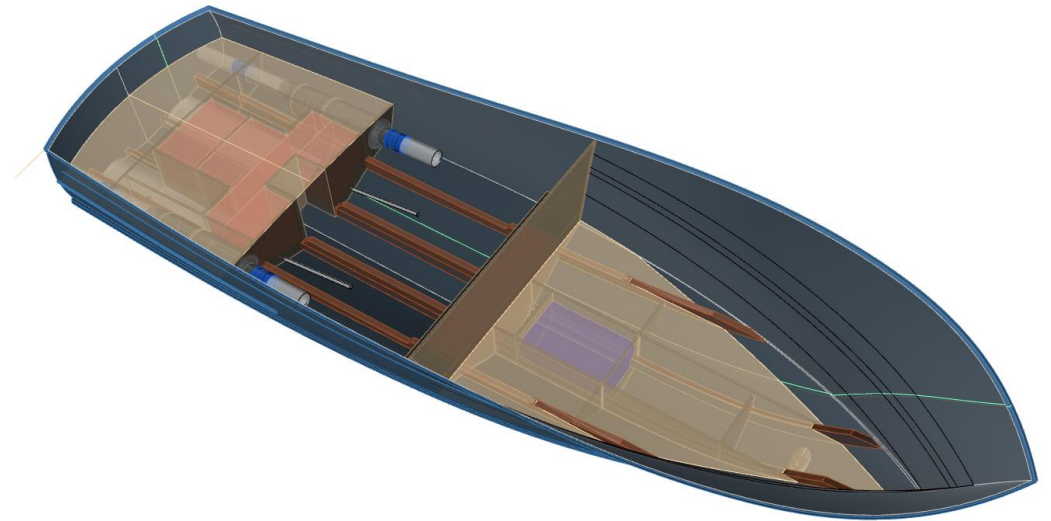
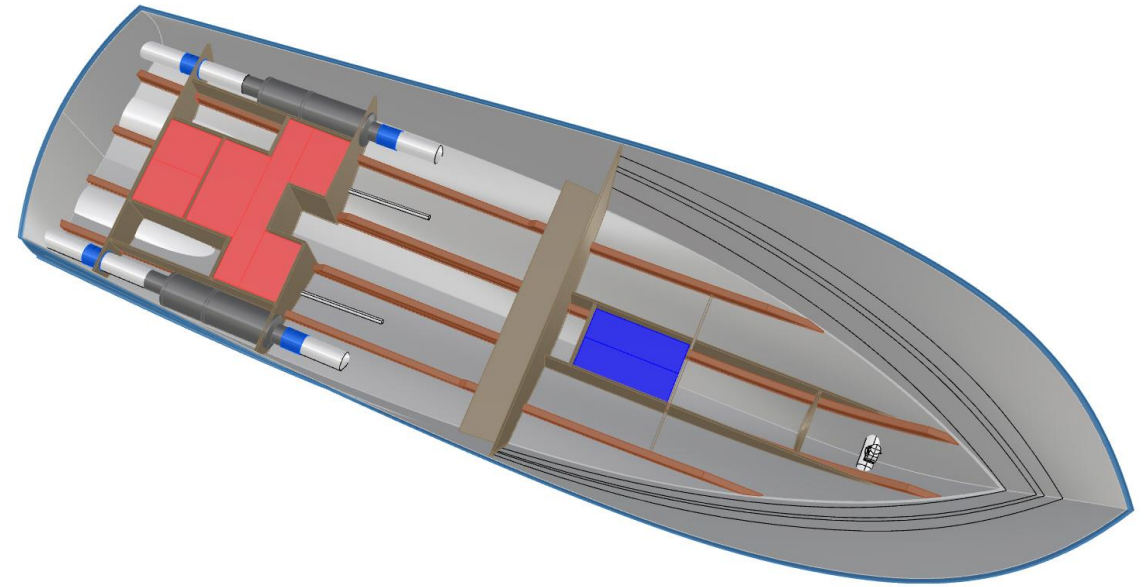


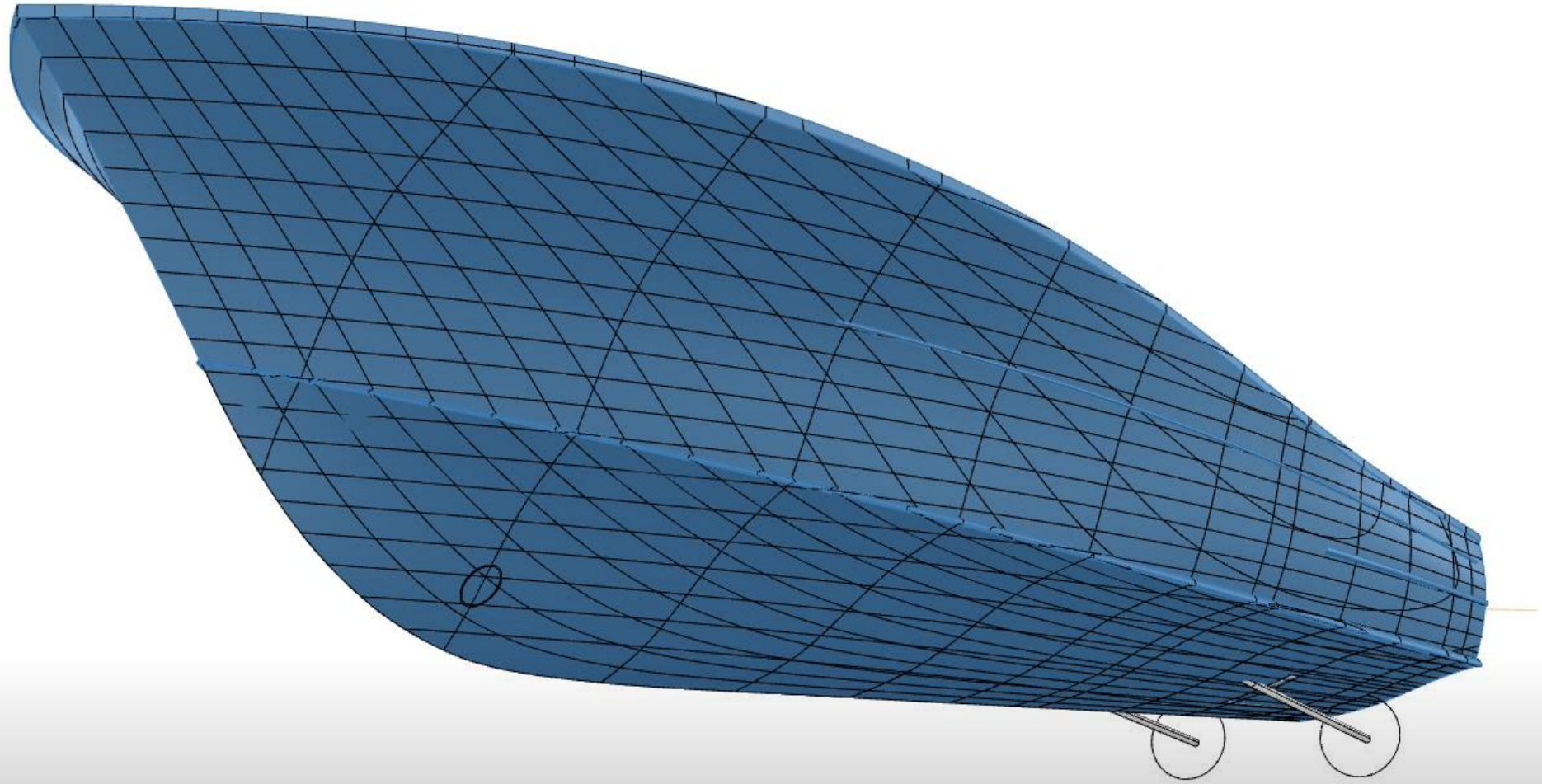
SEAKEEPER® 6

THE SEAKEEPER 6
PACKS A PUNCH.
DESIGNED TO
ELIMINATE UP TO 95%
OF BOAT ROLL ON
BOATS UP TO ~24
TONS, VESSELS ~43 -
52',
THE SEAKEEPER 6
PROVIDES 6,000 N-M-S
OF STABILIZING POWER
IN A COMPACT,
EFFICIENT PACKAGE.

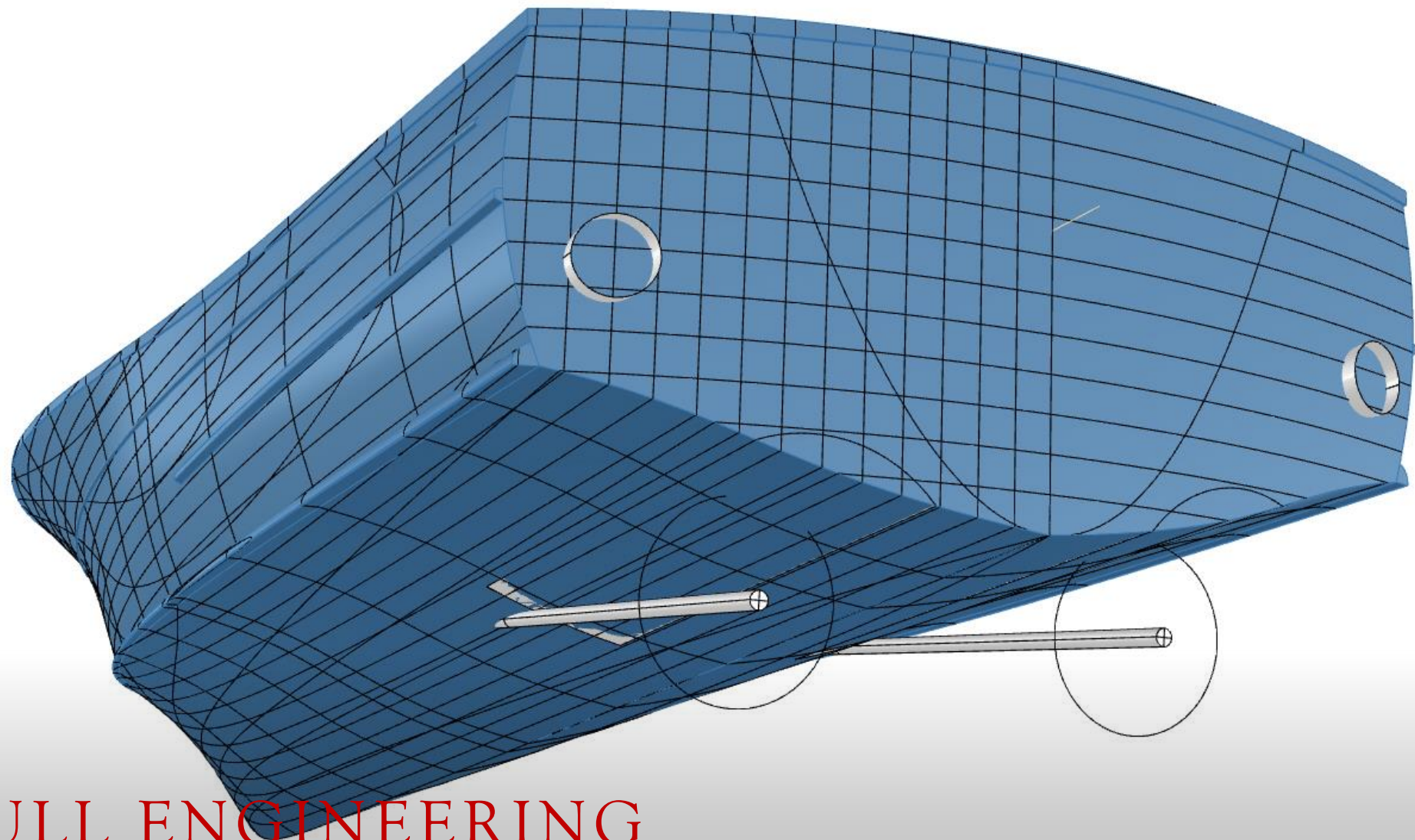


HULL ENGINEERING





HULL ENGINEERING

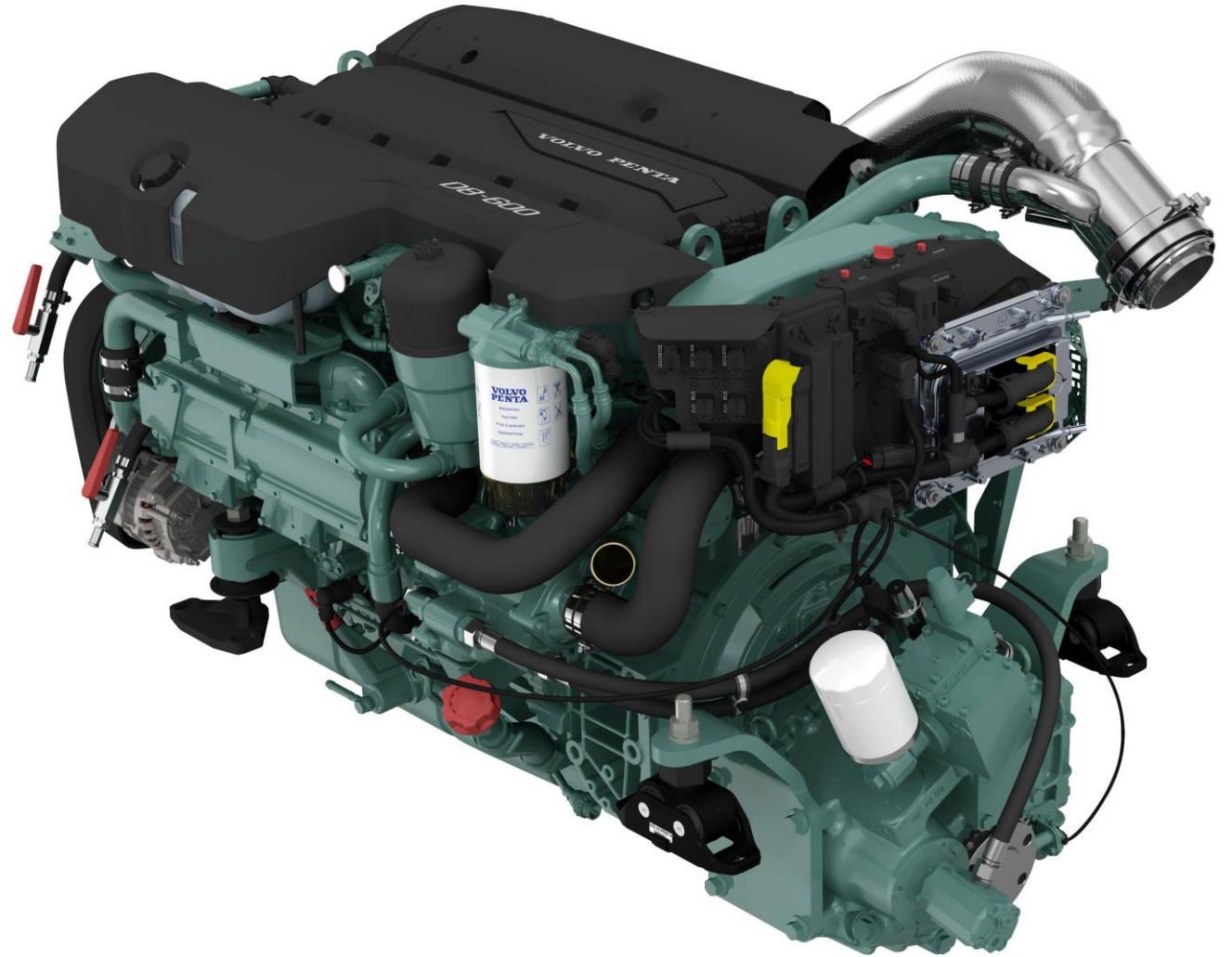


HULL ENGINEERING

OPTIONAL ENGINE

Volvo D-8 600hp

Volvo Penta D8 is an in-line 6-cylinder, 7.7-liter diesel engine using common-rail fuel injection, double overhead camshafts, a twin-entry turbo, and supercharger. The engine offers excellent maneuverability at low speeds, high power-to-weight ratio, and low fuel consumption.



OPTIONAL ENGINE CUMMINS QSC 600HP

- Overview:
- 449 kW | 600 hp
- Unmatched performance from industry-leading power density on this four-valve-per-cylinder engine
- Increased durability from innovative engine design characteristics
- Improved fuel economy and sociability from the high-pressure common-rail fuel system
- Maximize vessel performance and access comprehensive vessel diagnostic information via SmartCraft® electronics
- Peace of mind delivered by the Cummins Captain's Briefing and global service network
- Built at Rocky Mount Engine Plant in Rocky Mount, NC, U.S.





- The demand for Bausch Towers' craftsmanship has grown worldwide, with projects as far away as Taiwan, Brazil and New Zealand.
- Bausch Towers has assembled a team of marine tower experts with a combined experience of over 100 years in the industry. Whether designing a custom tower and accessories package for a new boat or retrofitting an existing vessel, you can be sure that Bausch Towers will create a solution that is both eye-catching and functional. Tim Bausch has overseen the growth and expansion of Bausch Towers and their product offerings, witnessing his towers venturing off to oceans spanning the globe.



Martek Marine Electronics is our supplier and installer. From stereo systems, cell phone boosters, wifi routers, televisions, MFD's , radar and omni sounders - they do it all! Their top priority has always been and continues to be customer service. They'll help you choose the most appropriate equipment for your needs, provide you with custom-design options, install your new equipment, and show you how to get the most out of your equipment. Their workmanship is unmatched.

Digital Sonar

KDS-6000BB

《Broadband》

The Next Big Thing is Here
Frequency Hopping Broadband Sonar

17 inch LCD Monitor (Option)



Features

- ▶ Change frequency on the go with our advanced Broadband Technology
- ▶ Massive improvement in scan speed, making detection of fish schools much faster
- ▶ Clearest possible images with our digital signal processing
- ▶ All setup and user settings changed instantly by utilizing Conditional Memory function
- ▶ Black Box sonar with 17 inch LCD Monitor available (Option)

