

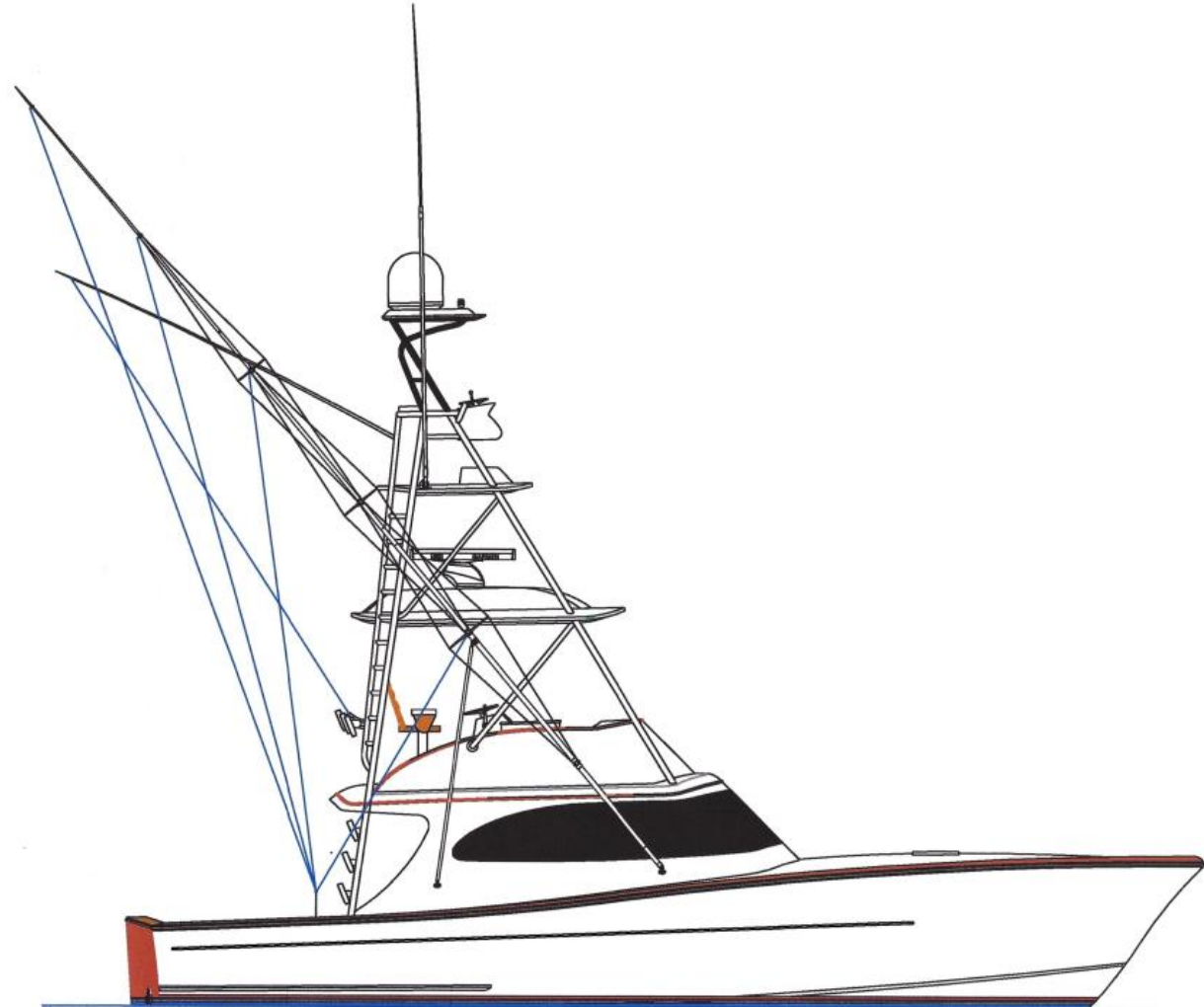


CURRENTLY UNDER CONSTRUCTION
TO BE DELIVERED THIS NOVEMBER

43 Gameboat

Length, overall (LO.A.)	43'
Beam, overall (B.O.A.)	14' 10"
Deadrise (at transom)	14.5°
Draft	33"
Displacement (std fuel load)	32,000 pounds
Fuel capacity standard	580 gallons
Water capacity	100 gallons
Holding tank capacity	10 gallons
Cockpit area	140 square feet
Performance (with 725 Cummins)	

Wide Open Throttle	36 Knots
Cruise	32 Knots
Fuel Burn	56 GPH





43 GAMEBOAT

2023 Model Year

STANDARD POWER

TWIN VOLVO D11 - 725HP *INCLUDED*
Volvo Joystick Positioning System

SPORTFISHING OPTIONS

	Price
--	-------

X ELECTRIC REEL OUTLET, 12V (2 EACH)	\$1,300
X ROD HOLDER, SWIVEL GEMLUX (2 each)	\$240
X RELEASE 6-HOLE BATTLE SADDLE BS6-2	\$11,150
X UNDERWATER LIGHTS <i>LUMITEC SEABLAZE2 SPECTRUM (2)</i>	\$1,500
X INSTALL TUBE-KODEN KDS-6000BB SONAR (supplied by customer)	\$10,100

GENERAL OPTIONS

	Price
--	-------

X STAINLESS STEEL WINDLASS & ANCHOR	\$9,255
X GYRO STABILIZER _ Seakeeper 6	\$65,000
X BOW THRUSTER (HYDRAULIC)	\$38,000
X AFT SALON ENCLOSURE (Strataglass)	\$3,600

TEAK & PAINT OPTIONS INCLUDED

	Price
--	-------

X FAUX TEAK HELM POD	\$4,260
X FAUX TEAK HAND-RAIL	\$5,625
X FAUX TEAK TOE RAIL	\$18,655
X FAUX TEAK TRANSOM	\$10,625
X TRANSOM DOOR - one piece walk-thru	\$7,850

OTHER OPTIONS available

	Price
--	-------

<input type="checkbox"/> PREP & PREWIRE FOR WATERMAKERWATER MAKER	\$1,300
<input type="checkbox"/> PREP & PREWIRE FOR ICE MACHINE PLUMBED TO FISH BOX	\$16,900
<input type="checkbox"/> TEAK HELM POD	\$6,775
<input type="checkbox"/> AFT SALON ENCLOSURE (Soft Acrylic)	\$4,975
<input type="checkbox"/> Upgrade 3 sides of enclosure to soft acrylic	\$6,800
<input type="checkbox"/> TEAK COVERING / COAMING BOARDS	\$19,750
<input type="checkbox"/> TEAK COCKPIT DECKING	\$28,500

ELECTRONICS & ENTERTAINMENT

Martec Marine Electronics is installing a complete electronics suite. Including Garmin MFD's, Airmar 509 CHIRP transducer, Fantom Radar, Fusion stereo with JL speakers, Icom vhf's, KVH Sat Dome with Direct TV and a Koden KDS-6000BB Sonar! Their workmanship is unmatched.

TOWER OPTIONS

Gap tower by Bausch Towers. Over the years they have installed many towers for us. A Bausch Tower is one of the hallmarks of a custom boat.

ADDITIONAL REQUESTS / REQUIREMENTS

To Be on display at the 2022 Fort Lauderdale International Boat Show

Delivery flowing 2022 FLIBS

TOTAL	\$ 1,857,195
--------------	---------------------

NOTE: Prices do not include delivery. All rights reserved to make changes at any time, without notice, to prices, specifications, equipment and product offering. All orders are accepted subject to prices, terms and conditions prevailing at time of order. All orders require a 20% advance payment at the time of the order. Payment of the balance is due in full at the time of delivery with stage payments in between. The Limited Warranty statement is available from the salesperson or by calling Release Boatworks at the number below.
Release Boatworks • 901 Duerer Street • Egg Harbor City, NJ 08215 • (833) FISH RBW • (833) 347-4729 • RELEASEBOATWORKS.com

Customer Signature	Date
--------------------	------

Builderer Signature	Date
---------------------	------

Onan Marine QD

8 kW

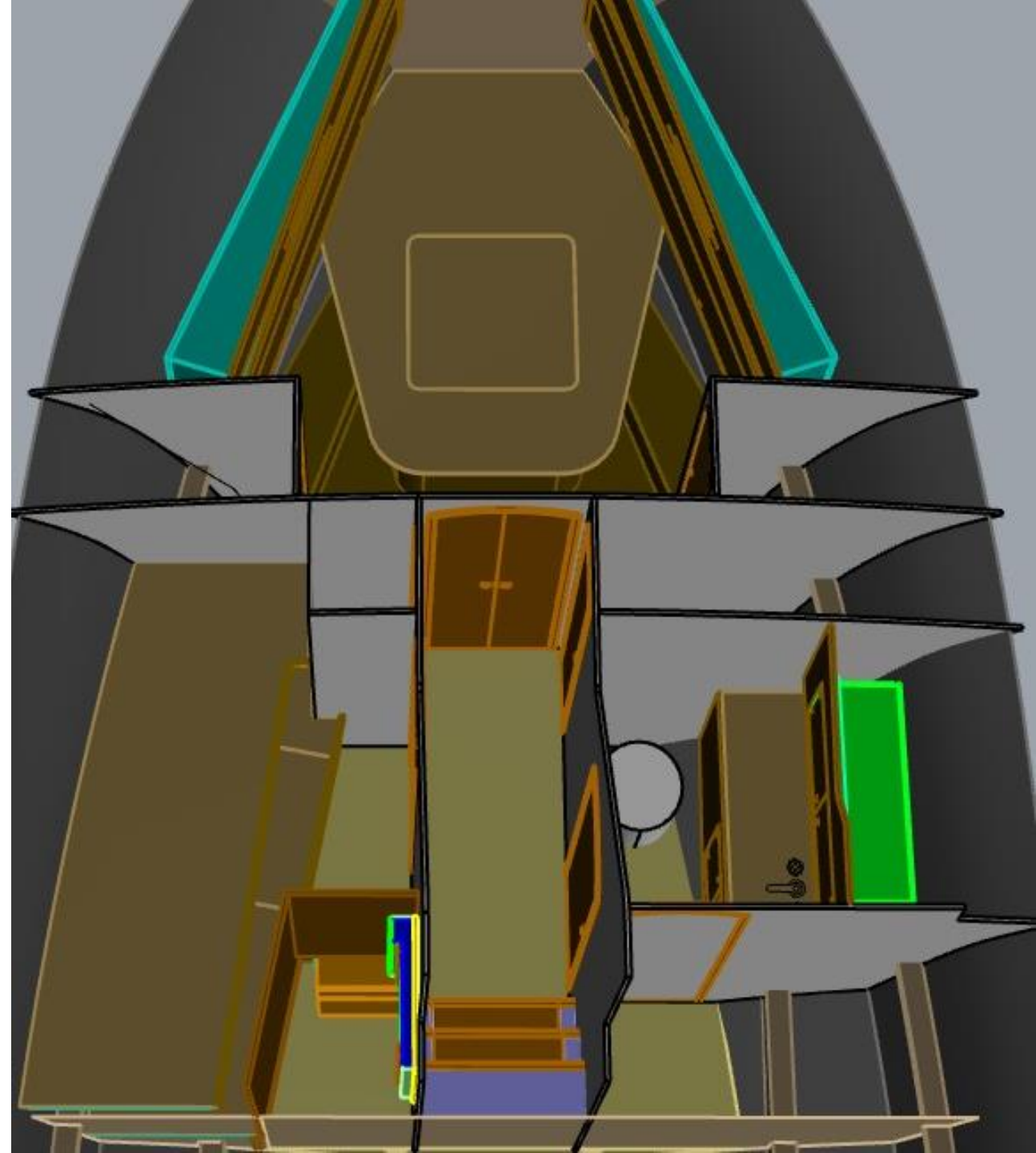
Generator

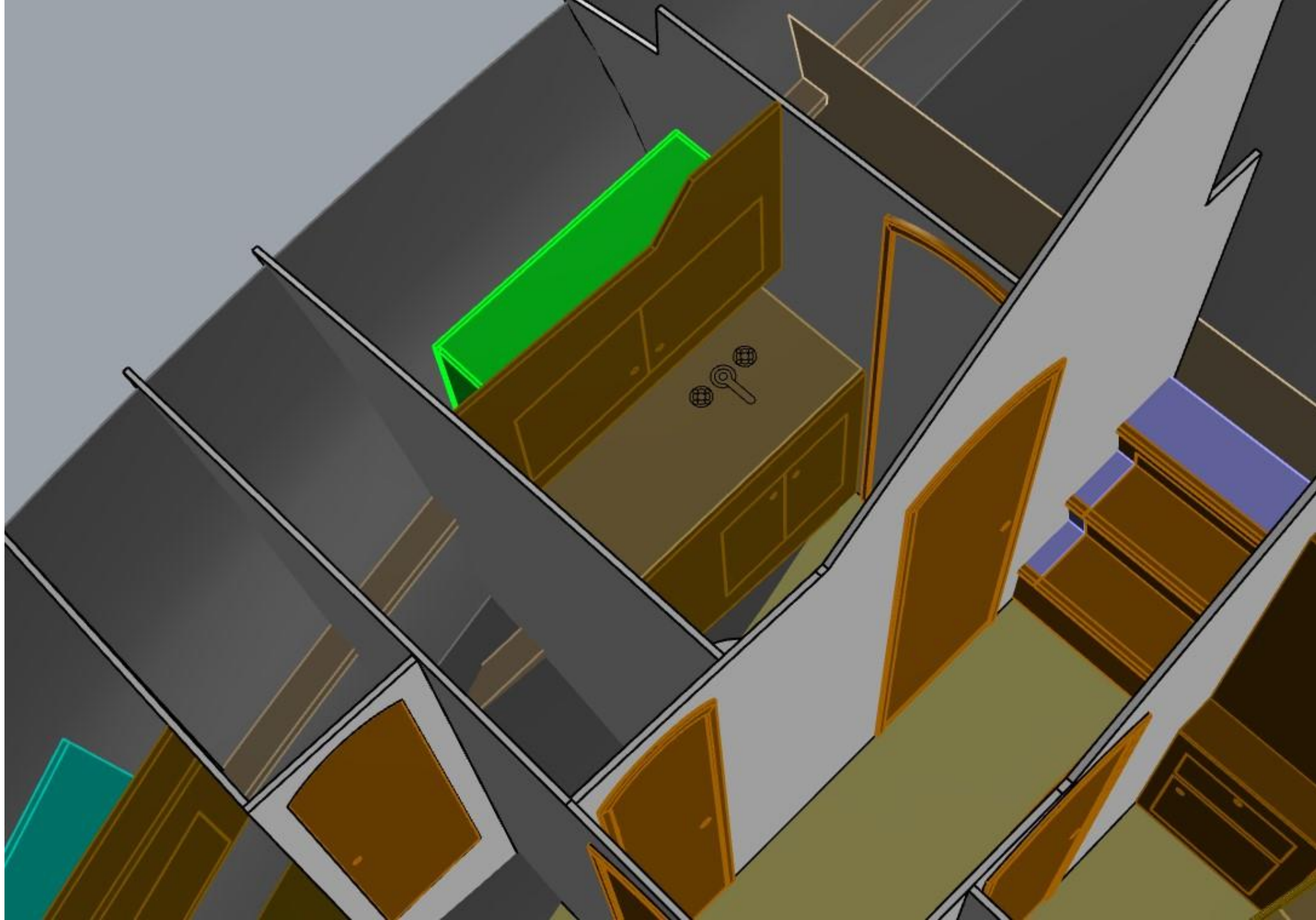


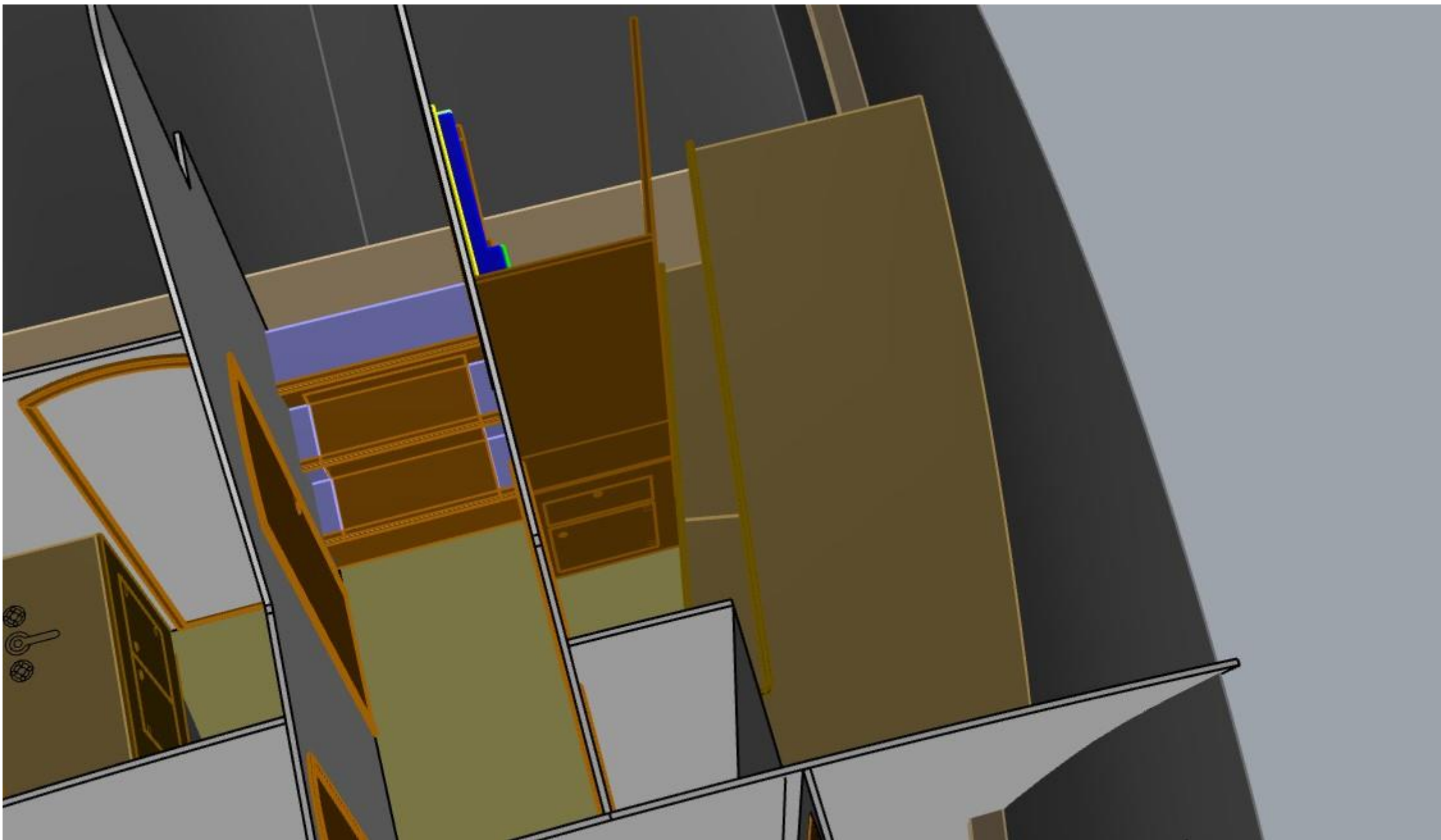
8 kW

- The Cummins Onan Digital Display provides user-friendly diagnostics including extensive engine and alternator information and more
- Largest worldwide certified Distributor/Dealer support network in the industry
- The optimized mounting system greatly reduces vibration
- Electronic frequency control - a must for digital appliances and computers requiring quality power
- Cummins Onan marine generator sets are emissions certified to U.S. Environmental Protection Agency (EPA) emission standards
- More than 90 years of marine experience stand behind every Cummins Onan Marine generator set

CABIN LAYOUT







SALON LAYOUT



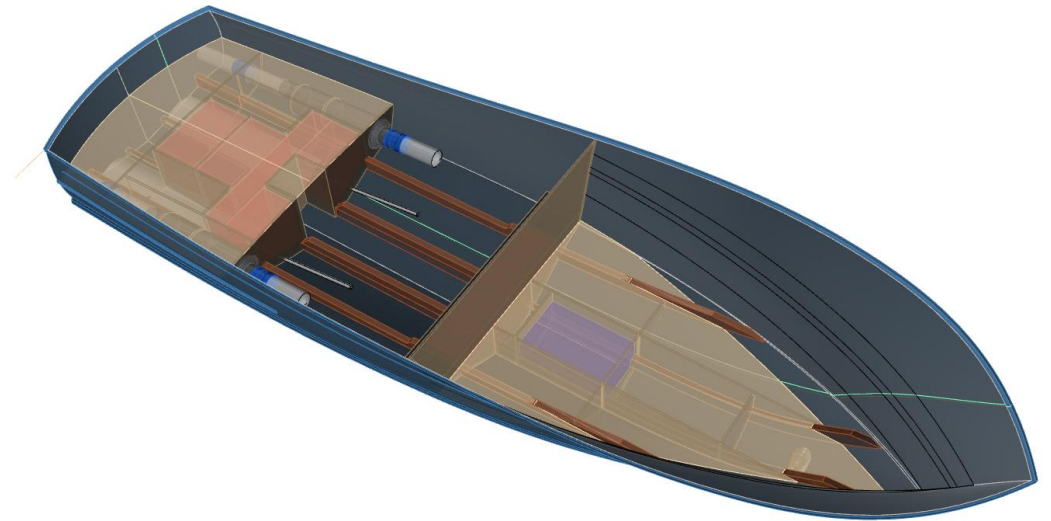
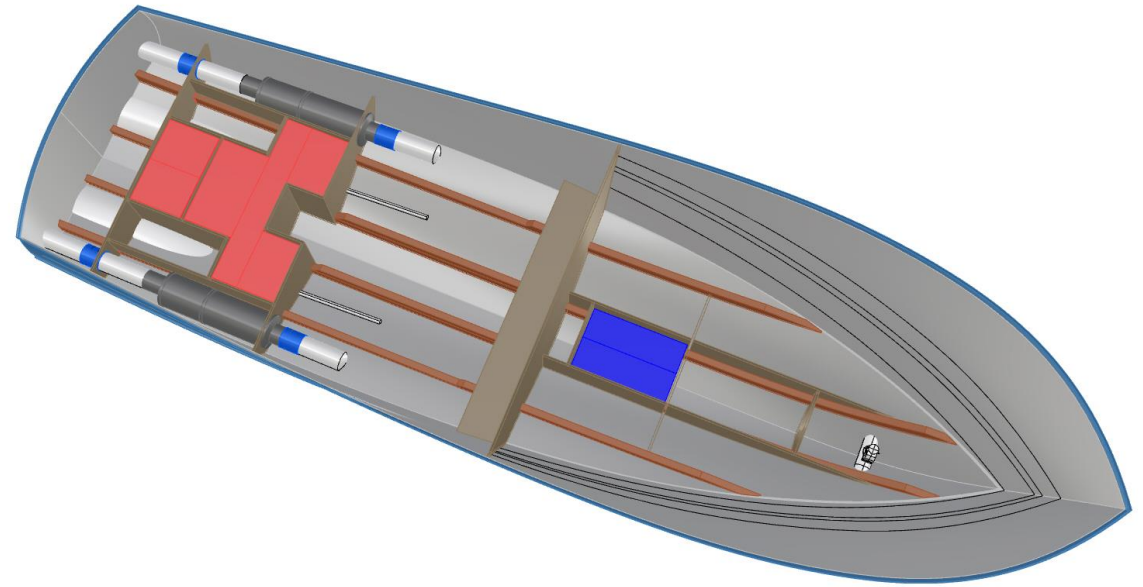


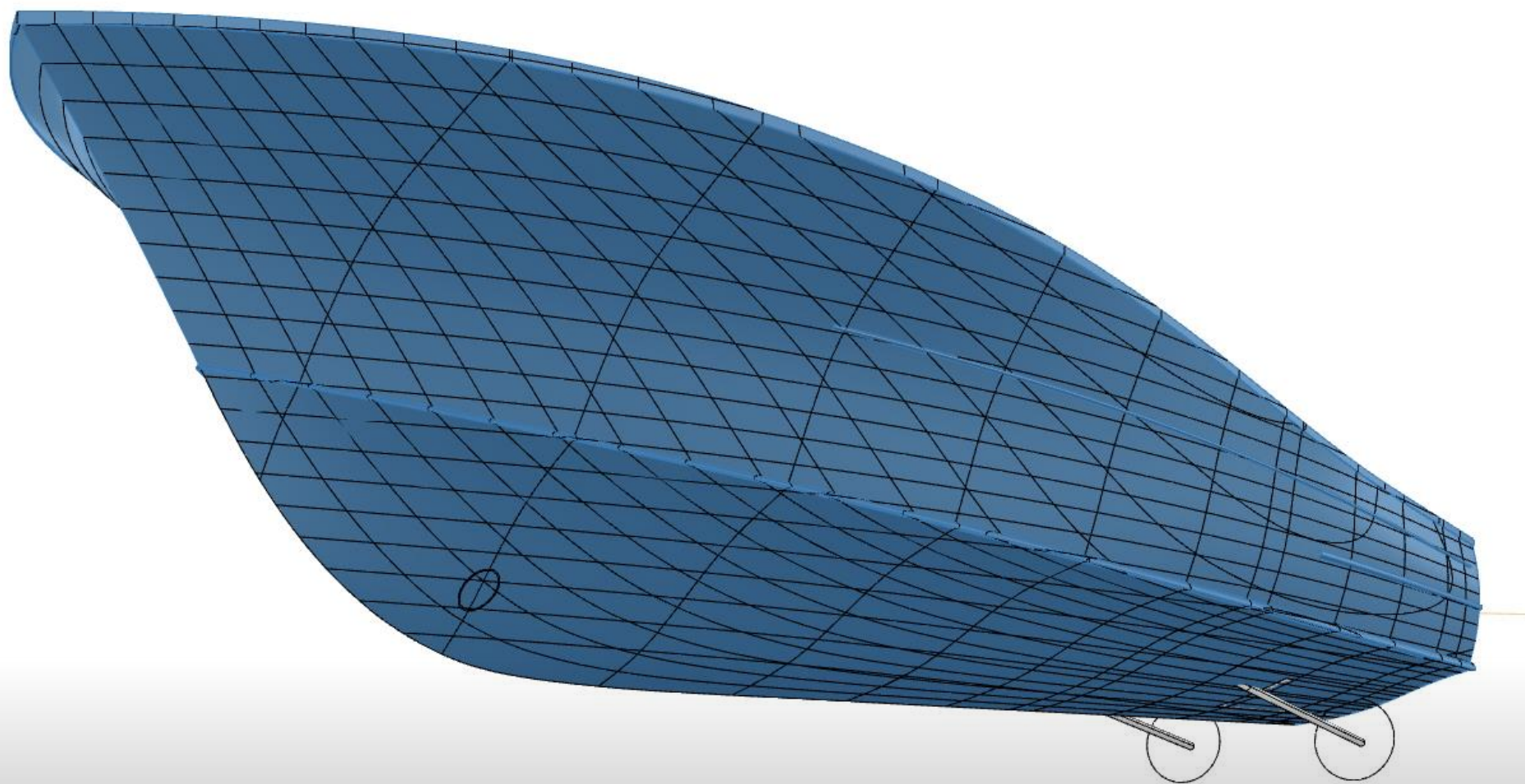


THE SEAKEEPER 6
PACKS A PUNCH.
DESIGNED TO
ELIMINATE UP TO 95%
OF BOAT ROLL ON
BOATS UP TO ~24
TONS, VESSELS ~43 -
52',
THE SEAKEEPER 6
PROVIDES 6,000 N-M-S
OF STABILIZING POWER
IN A COMPACT,
EFFICIENT PACKAGE.

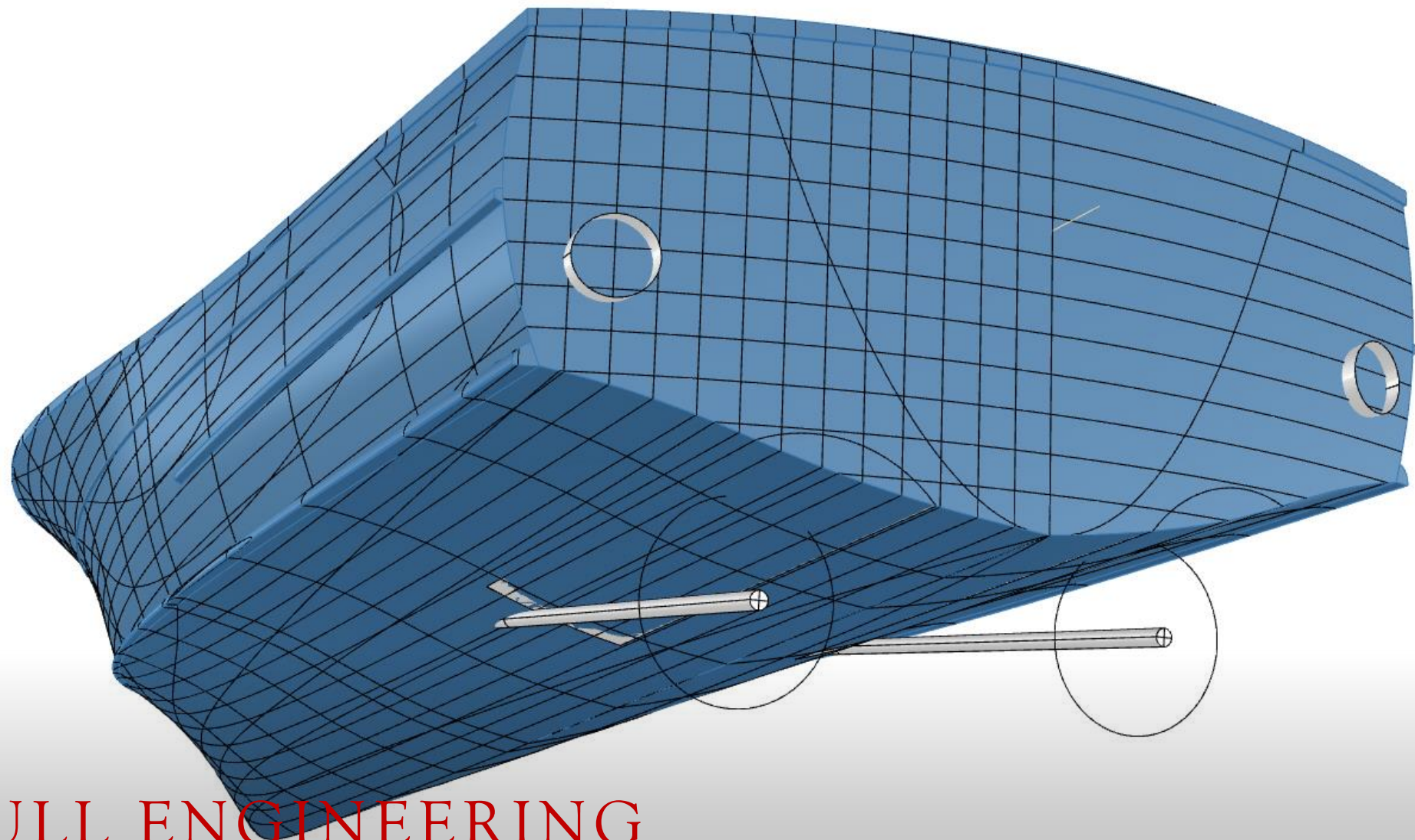


HULL ENGINEERING





HULL ENGINEERING



HULL ENGINEERING

ENGINE

Volvo D11 725hp

Volvo Penta D11 is an in-line 6-cylinder, 10.8-liter diesel engine using common-rail fuel injection, overhead camshaft, and a twin-entry turbo using a water-cooled exhaust manifold. This contributes to excellent operating economy and world-class diesel performance, combined with low emissions.





VOLVO PENTA MARINE ACCESSORIES

IMPROVE THE EXPERIENCE

DYNAMIC POSITIONING SYSTEM

- Lets you hold and keep your boat's position and heading within a very limited area. Perfect when you're preparing for docking or waiting for refueling.

JOYSTICK DRIVING

- A smart, new solution for intuitive driving – push and rotate the joystick for precise steering at all speeds.

JOYSTICK DOCKING

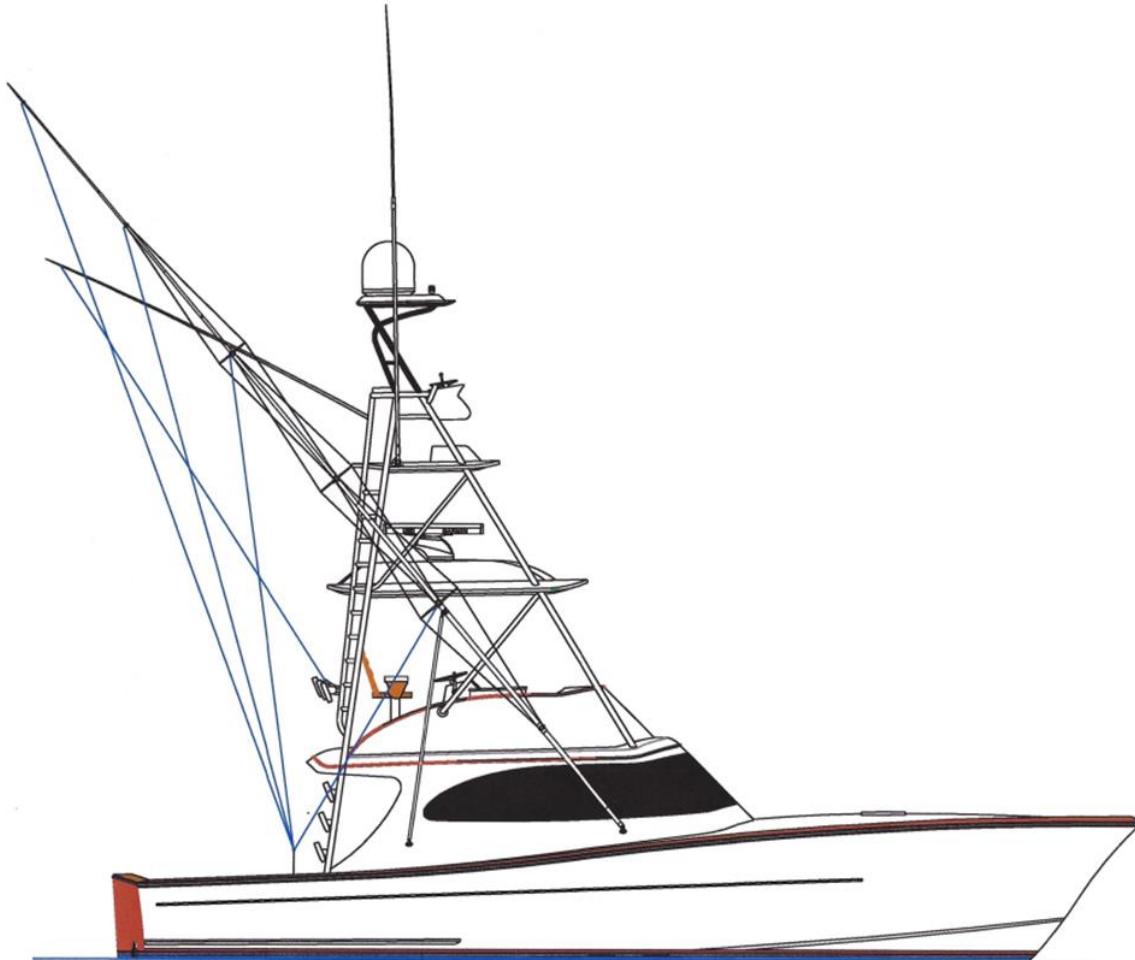
- The essence of easy boating: fingertip handling with perfect precision makes docking and close-quarter maneuvering simple, even fun.



- The demand for Bausch Towers' craftsmanship has grown worldwide, with projects as far away as Taiwan, Brazil and New Zealand.
- Bausch Towers has assembled a team of marine tower experts with a combined experience of over 100 years in the industry. Whether designing a custom tower and accessories package for a new boat or retrofitting an existing vessel, you can be sure that Bausch Towers will create a solution that is both eye-catching and functional. Tim Bausch has overseen the growth and expansion of Bausch Towers and their product offerings, witnessing his towers venturing off to oceans spanning the globe.



Martek Marine Electronics is our supplier and installer. From stereo systems, cell phone boosters, wifi routers, televisions, MFD's , radar and omni sounders - they do it all! Their top priority has always been and continues to be customer service. They'll help you choose the most appropriate equipment for your needs, provide you with custom-design options, install your new equipment, and show you how to get the most out of your equipment. Their workmanship is unmatched.



6800 S.W. Jack James Drive
Unit# 3
Stuart, Florida 34997
Phone: (772) 283-2771
Fax: (772)283-3101
Toll Free: (877)-591-6911

PROUDLY SERVING THE MOST KNOWLEDGEABLE CUSTOMERS IN THE SPORT FISHING INDUSTRY
RESIN INFUSION METHOD USED IN ALL FIBERGLASS COMPONENTS

CUSTOMER : RELEASE BOAT WORKS
CONTACT : TERENCE WATSON
ADDRESS: 901 DUERER STREET
CITY,ST,ZIP: EGG HARBOR, NJ 08215
PHONE : CELL: (609)929-2418 FAX:
CAPT: OWNER:
BOAT SIZE AND MAKE: 42 RELEASE DAY BOAT
BOAT NAME:
E-MAIL: TERENCE@RELEASEBOATWORKS.COM

DATE: 10-18-21
QUOTE #: 743

INVOICE: 503081

LOCATION: BAT

SALES PERSON: TIM BAUSCH

HULL # 42-01

DESCRIPTION	EACH	QTY	TOTAL PRICE
TUNA TOWER 5' GAP (MOLDED RESIN INFUSED HT, SINGLE PER. BAR, BRUSH PIPE, 2 STAND OFF)	56,688.00	1	\$56,688.00
MOLDED RESIN INFUSED STANDING PLATFORM W/ POD	10,279.00	1	\$10,279.00
PLATFORM WASH DOWN POD	2,143.00	1	\$2,143.00
BUGGY TOP W/ MOLDED RESIN INFUSED HT (SATIN BLACK, COMPLETE, 4 ANTENNA NIPPLES)	10,211.00	1	\$10,211.00
SAT DOME POD MOLDED (BUGGY)	1,370.00	1	\$1,370.00
CONTROL BOX STANDARD ANGLE TOP 60" COMPASS (FLAT WHISPER GRAY TOP)	5,844.00	1	\$5,844.00
GLOVE BOX - LARGE & SMALL	1,015.00	2	\$2,030.00
X-LARGE EXTENDED RADAR POD	2,633.00	1	\$2,633.00
TEASER REEL OPENING WITH SLIDING DOOR (REELS NOT INCLUDED)	3,874.00	1	\$3,874.00
DROP DOWN RADIO BOX	4,175.00	1	\$4,175.00
ANCHOR LT	258.00	1	\$258.00
RED/GREEN RUNNING, STERN LTS MOLDED (LED) USCG CERT.	2,008.00	1	\$2,008.00
FLUSH MOUNTED DOME LIGHTS TRI COLOR LED (LUMITEC) (4) MAIN (2) STANDING (2) BUGGY	360.00	8	\$2,880.00
SPREADER LT SINGLE MOLDED "LED" (LUMITEC) FWD UNDER PLATFORM	1,732.00	1	\$1,732.00
SPREADER LT 2 IN 1 MOLDED "LED" (LUMITEC) AFT UNDER PLATFORM	2,084.00	1	\$2,084.00
LUMITEC RAZOR TRIPLE MOLDED SPOT LIGHT LED (TOP FWD PLATFORM)	3,250.00	1	\$3,250.00
AFT DOUBLE BRIDGE RAIL LEG TO LEG 1-1/4 PIPE	4,213.00	1	\$4,213.00
ROD HOLDERS W/3" OVAL GUSSET (6) AFT HARDTOP (3) EACH AFT LEG (2) TOP RING OB	185.00	14	\$2,590.00
RUPP" TOURNAMENT LIFT OUT BASES W/ HD BACK BAR	3,335.00	1	\$3,335.00
RUPP SPORT AUTO LOCKS	1,646.00	1	\$1,646.00
RIGGER INSTALLATION	1,780.00	1	\$1,780.00
CENTER RIGGER MOUNT ONLY	251.00	1	\$251.00
CENTER LINE FIXED JUMP SEAT	1,187.00	1	\$1,187.00

* THE ABOVE DOES NOT INCLUDE CONTROLS OR STEERING
* THE ABOVE DOES NOT INCLUDE ENCLOSURE
* THE ABOVE DOES NOT INCLUDE YARD FEE OR CRANE IF APPLICABLE

* RELEASE TO DO FINAL LIGHT HOOK UP (LIGHT WIRES TO END IN CONTROL BOX AND PLATFORM)

KDS-6000BB

《Broadband》

The Next Big Thing is Here
Frequency Hopping Broadband Sonar

17 inch LCD Monitor (Option)

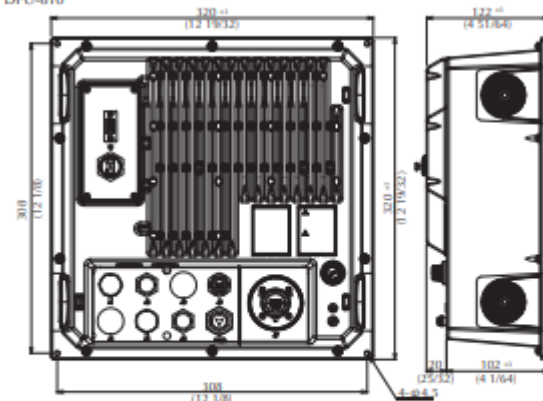


Features

- ▶ Change frequency on the go with our advanced Broadband Technology
- ▶ Massive improvement in scan speed, making detection of fish schools much faster
- ▶ Clearest possible images with our digital signal processing
- ▶ All setup and user settings changed instantly by utilizing Conditional Memory function
- ▶ Black Box sonar with 17 inch LCD Monitor available (Option)

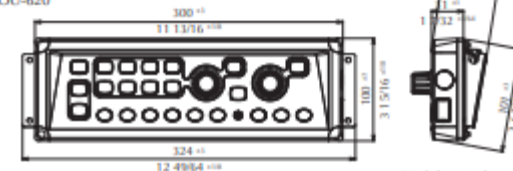
Processor unit
DPU-610

unit: mm (inch)



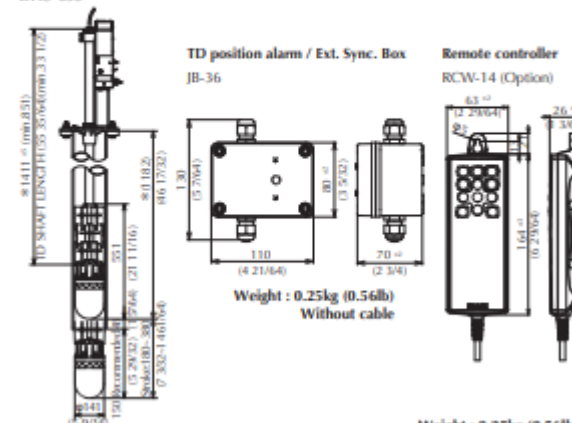
Weight : 5.1kg (11.5lb)

Operation unit
DOU-620



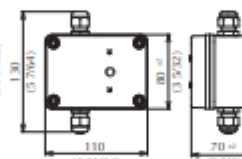
Weight : 1.1kg (2.5lb)
With base and 5M connecting cable

Hull unit
DHU-630



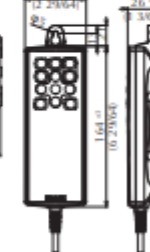
Weight : 41kg (91lb)

TD position alarm / Ext. Sync. Box
JB-36



Weight : 0.25kg (0.56lb)
Without cable

Remote controller
RCW-14 (Option)



Weight : 0.25kg (0.56lb)
Without cable

